



Vortex® Dual

Refrigerant Recovery Machine

THE MOST POWERFUL UNIT AVAILABLE WITH THE BEST WARRANTY IN THE INDUSTRY

The new Vortex Dual combines the proven capabilities of previous Vortex instruments with new extended features to give you the fastest, smallest, and easiest to use product yet. Vortex Dual sets itself apart by offering a full 1 HP dual piston compressor for the fastest recovery speeds available under real service conditions. A unique micro-channel condenser combined with an oversize fan helps lower discharge pressures resulting in sustained speed under the hottest ambient temperatures.

Vortex Dual is simple to use with only two valves to operate, easily readable gauges for both suction and tank pressure, and self-purge capability without the need to change hoses.

INFICON is so confident in the durability and performance of Vortex Dual, that we offer an industry-leading three-year over-the-counter replacement warranty. With INFICON, you get the tools you need to get the job done quickly and easily, while being Laboratory Accurate. Toolbox Tough.®

FEATURES AT A GLANCE

- 1 HP dual piston compressor provides industry-leading recovery rates
- Micro-channel condenser provides exceptional heat exchange allowing Vortex Dual to maintain recovery rates throughout the entire recovery cycle
- Oversize fan provides exceptional cooling
- Simple two valve operation
- Full size protected gauges for both suction and tank pressure
- Self-purge without the need to change hoses
- Filter / dryer included
- Noise absorbing blow molded case
- Three-year over-the-counter replacement warranty

SPECIFICATIONS

Unit includes	Shoulder strap, filter/dryer, 6 ft. detachable power cord
Compatible refrigerants	Recovers commonly used CFCs, HCFCs, and HFCs including blends such as R410A, 12, 22, 134a, 407C, 410A, 500, 502, and other Class III, IV and V refrigerants
Weight	29.75 lbs
Dimensions (L x W x H)	16.7 x 9.2 x 14.2 in.
Compressor	1 HP oil-less, dual valve, AC motor drive
High-pressure shut-off	550 psi
Power Source	115V, 60 Hz, 15A or 230V, 50 Hz, 10A (depending on model)
Warranty	Three-year over-the-counter replacement

ORDERING INFORMATION

Vortex Dual 115V	714-202-G1
Vortex Dual 230V with CE	714-202-G11
Replacement Parts	
Power Cord	068-0684



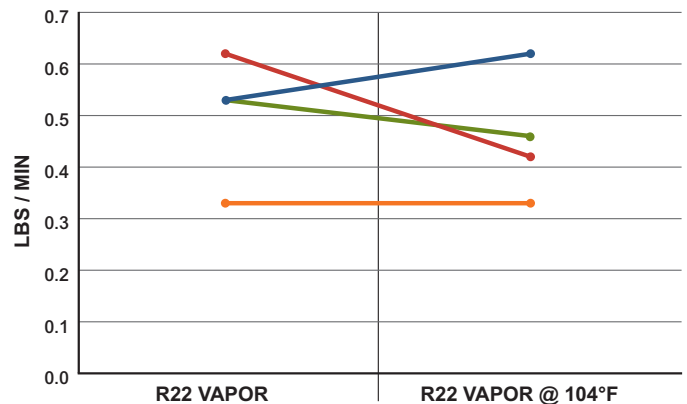
The lightweight design of Vortex Dual includes a 1 HP dual piston compressor that provides industry-leading recovery rates.

CERTIFICATIONS

INFICON Vortex Dual is an EPA-Certified machine in accordance with Section 608 of the Clean Air Act. It has been independently tested and certified to be in conformance with AHRI standard 740-1998.

REFRIGERANT TESTED	REPRESENTATIVE OF CATEGORY	PUSH-PULL RATE (LB/MIN)	LIQUID RATE (LB/MIN)	VAPOR RATE (LB/MIN)
R134a	III	11.64	4.03	0.42
R22	IV	11.00	5.98	0.53
R410A	V	17.39	3.55	0.55

THE VORTEX DUAL EXCELS UNDER REAL WORLD CONDITIONS



● Vortex Dual ● Appion G5 Twin ● Promax RG6 ● YJ 95730



www.inficonservicetools.com service.tools@inficon.com

Vortex is a registered trademark of INFICON GmbH.

Due to our continuing program of product improvements, specifications are subject to change without notice.

eibf142a1 ©2014 INFICON



NEW VORTEX DUAL REFRIGERANT RECOVERY MACHINE

New Vortex Dual to Launch July 2014

The fastest unit available with the best warranty in the industry!

- Overview
- Features at a glance
- 1 HP dual valve compressor advantage
- Micro-channel condenser advantage
- Smaller package
- Easy operation
- Product Transition



New Vortex Dual Overview

Due to Market July 2014

- 4th generation Refrigerant Recovery Machine from INFICON
- Same PART NUMBER (714-202-G1)
- Same PRICE
- Same WARRANTY (Three-year over the counter)
- Industry leading high temp recovery rates
- 20% smaller than existing Vortex AC footprint
- Still designed and built by INFICON!

New Vortex Dual

Features at a Glance:

- 1 HP dual piston compressor provides industry leading recovery rates
- Innovative Micro-channel condenser provides exceptional heat exchange allowing Vortex Dual to maintain recovery rates throughout the entire recovery cycle
- Large fan provides exceptional cooling
- Simple two valve operation
- Full size protected gauges for both suction and tank pressure
- Self-purge without the need to change hoses
- Filter / dryer included
- Three-year over the counter replacement warranty

Vortex Dual

Its generally understood speed throughout the recovery cycle is contingent on a few simple factors:

- Compressor throughput
- Size of your hoses, fittings, connections
- Ability to condense refrigerant in a hot ambient temperature

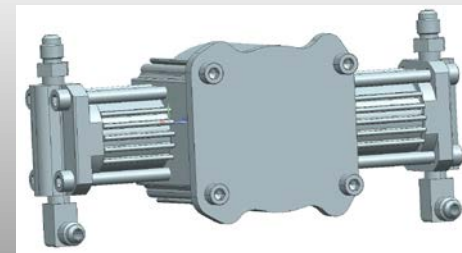
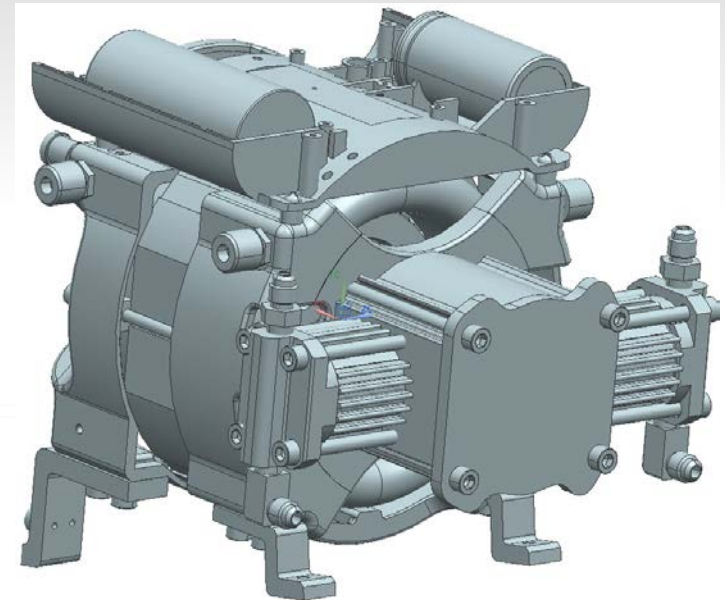
Vortex Dual has answered two problems the competitors have not...

- 1HP dual piston compressor
 - Biggest compressor available
 - Fastest Speeds
- Micro-channel condenser
 - Best condenser available
 - Lowers discharge temperatures / pressures
 - Best results in hot ambient temperatures

Vortex Dual - Compressor

Built for Speed

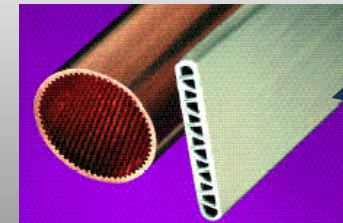
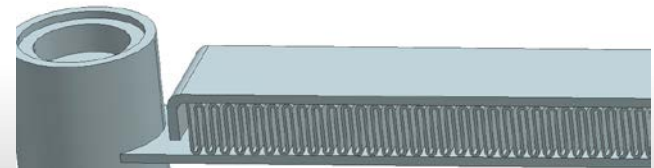
- Full 1 HP motor is twice the size of most competitive units
 - Appion G5twin (1/2 hp)
 - YJ LTE (1/2 hp)
 - Mastercool Twin Turbo (1/2 hp)
 - Promax RG6 (3/4 hp)
- Dual piston compressor for twice the pumping power of many competitors
 - YJ XLT – Single piston
 - Promax G4 – Single piston
 - Promax RG5400 – Single Piston
 - Appion G1 – Single piston
 - Refco– Single piston



Vortex Dual – Micro-Channel Condenser

Built for Speed

- Micro-channel condenser
 - Lowers discharge pressure and temperature, leading to faster rates throughout recovery cycle
 - 40% better efficiency than traditional tube and fin condensers
 - Only recovery machine on the market with this type condenser
- Large direct drive fan
 - Accelerates cooling of micro-channel condenser leading to lower head pressures and faster rates

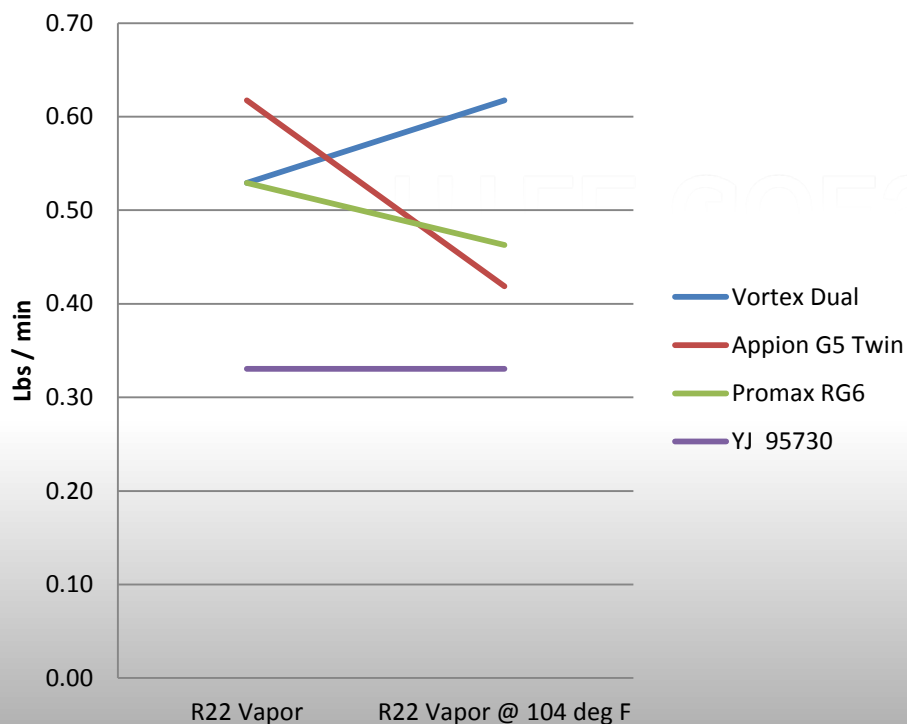


Micro-channel condenser vs. tube & fin

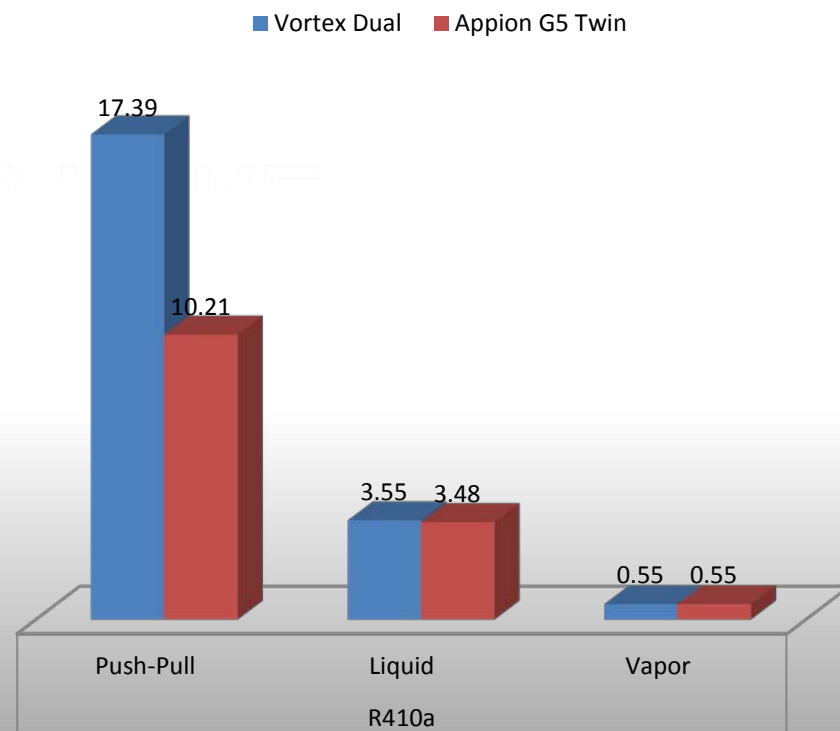
Vortex Dual

Vortex Dual excels in real world conditions – High Temperature, High Pressure!

High Temperature Vapor Test of R22



Vortex Dual vs. Appion G5 on 410a

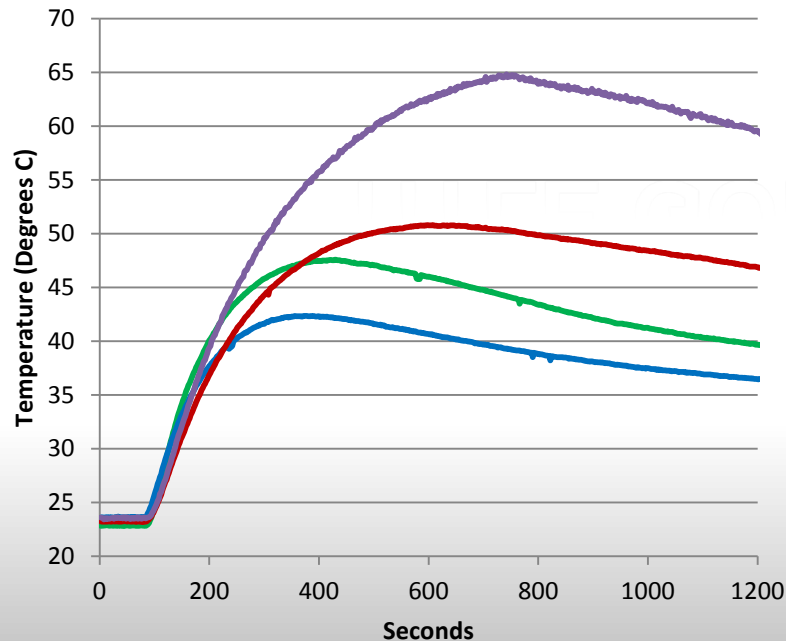


*Note – All Rates certified by UL or ARI

Vortex Dual

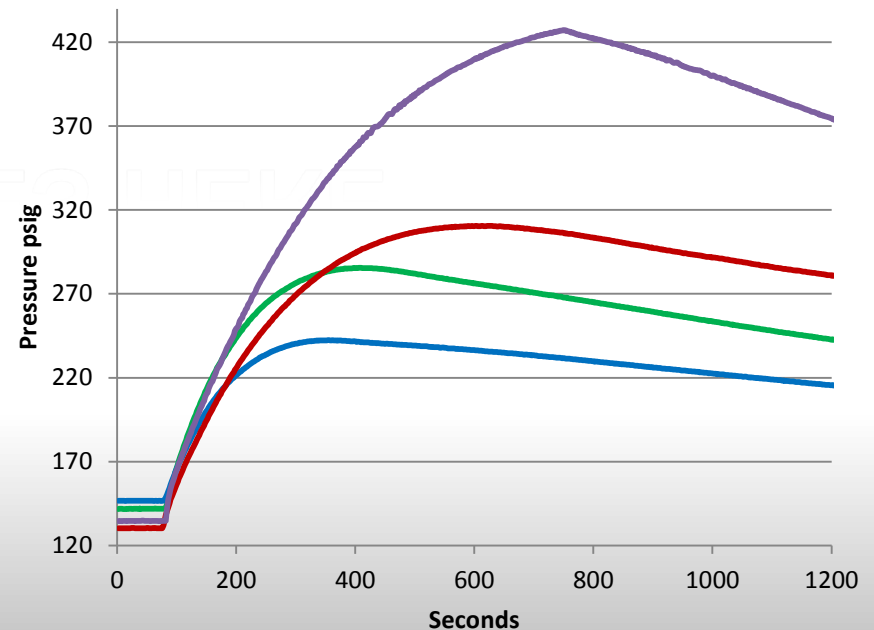
Superior Micro-channel condenser outperforms competitors by lowering tank pressures and temperatures resulting in increased speed through recovery cycle

Temp Receiver Tank



— BACHARACH ECHO-2020 — Vortex Dual
— Appion G5 Twin — CPS TR21

Pressure Receiver Tank



— BACHARACH ECHO-2020 — Vortex Dual
— Appion G5 Twin — CPS TR21

*Note – CPS testing without optional MT69 Molecular Transformer" (Condenser)

Vortex Dual

Built for Longevity

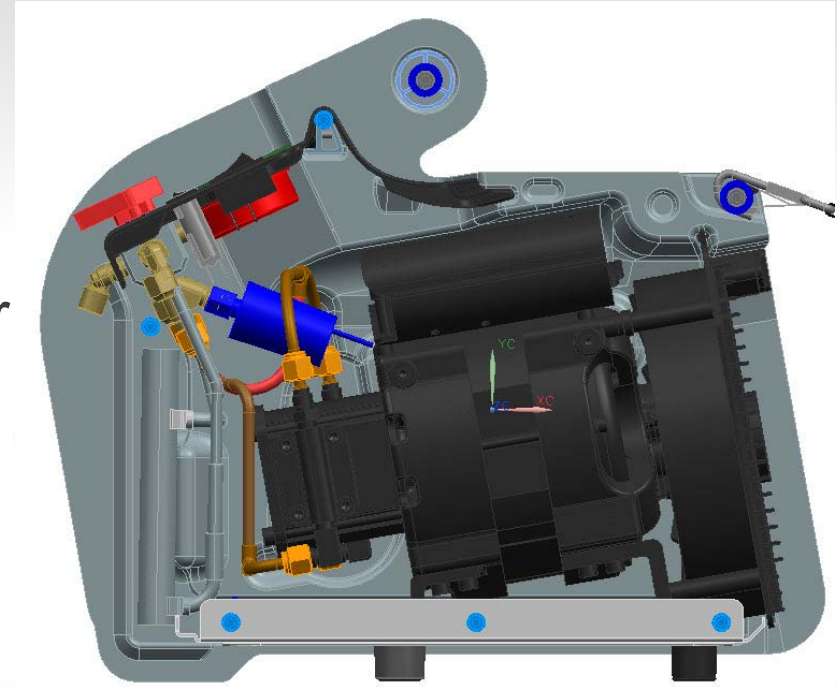
- Industry Best Three-year OTC Warranty
 - Appion G5twin – one year conditional warranty
 - YJ LTE – one year warranty
 - Promax Rg6000 – one year OTC warranty
 - CPS TR21 – one year repair or replace
- Rugged blow modeled case
- All metal base, knobs, and handle
- Designed and built by INFICON



Vortex Dual

Built for Ease of Use

- Simple two valve design
- Self purge without the need for hoses
- Easily serviced
- Filter provided
- Large suction and discharge gauges



Vortex Dual

20% Smaller than Vortex AC Platform



Vortex Dual Configurations

- 714-202-G1
 - 115v, North American power cord
 - English / Spanish / French Manual
 - Available July 2014
- 714-202-G2
 - 230v, Euro power cord
 - English / Spanish / French Manual
 - Available Fall 2014
- 714-202-G11
 - 230v, Euro power cord
 - CE certified
 - English / Spanish / French / German / Italian / Dutch / Swedish
 - Available Fall 2014
- 714-202-G31
 - 230v, Australian power cord
 - English / Spanish / French Manual
 - Available Fall 2014

Vortex AC Discontinuation

- Vortex AC is discontinued as of July 28, 2014
 - There will be no transition period of selling both Vortex AC and Vortex Dual
- Vortex Dual 115v version will have same Part # 714-202-G1
- Warranty will be supported for the full three year period.
 - Warranty units will be replaced with Vortex Dual
- Repair parts will be available until we no longer have parts.
- We do not intend on taking back old Vortex AC's that are in Distributor's stock

Vortex Dual

Vortex Dual continues the tradition...

Laboratory Accurate. Toolbox Tough.